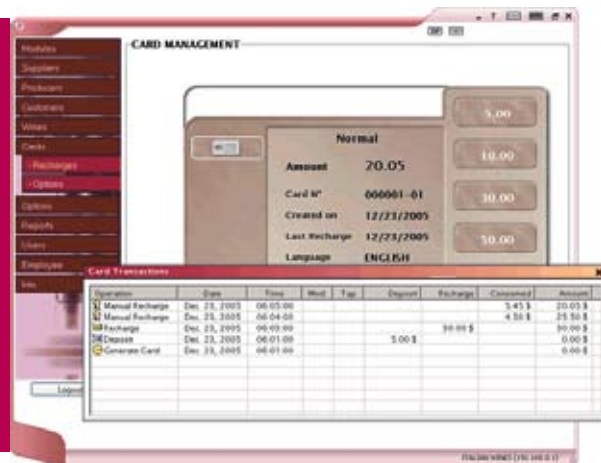




enosoft software



To manage the operation of the Enomatic Wine Card System there are two (2) formats of our Enosoft software available:

- Enosoft-CardWriter
- Enosoft-Professional

Enosoft-CardWriter

Enosoft-CardWriter is for installations that do not need to track and record information about the service of wines. It allows you to:

- **Create** Wine Cards for use with the installation
- **Add** value onto the Wine Cards
- **Read** the value on the Wine Cards
- **Deduct** value from the Wine Cards

Enosoft-Professional

Enosoft-Professional is our full feature software that captures and stores all data about every wine serving transaction. It allows:

- creation of a wine database for every wine
- creation of databases for both producers and suppliers to record consumption of their products
- the ability to import the initial data on wines, suppliers, etc. into Enosoft-Professional
- the ability to create multiple "Offers" for the same wine. eg. "Offer 1 Normal price \$12.00", "Offer 2 Special Promotion price \$10.50" etc
- monitoring of each Enomatic module in the system to control its operation
- monitoring of every bottle position in the system to show the wine installed, the volume remaining in the bottle and when the tap position was last cleaned
- automatic warnings can be set to indicate that a bottle is becoming empty and it will soon require changing before the "bottle empty" warning is activated

- automatic updating of the Digital Price Displays above each bottle position when a wine is installed
- creation of a customer database and staff database
- linking of customers to "Loyalty", "VIP" or "Restaurant" Wine Cards to track all consumption (or track wine service by staff)
- recording of every wine served – when it was served, how much was served, who served it, what volume, etc.
- the ability to create Wine Cards and add, read and deduct value from the cards
- the ability to include a deposit on the Wine Cards which can be refunded when the card is returned by the customer
- the ability to block Wine Cards from future operation (in the event they are lost)
- the ability to create a wide range of operational Wine Card formats (Normal, Loyalty, Service, VIP, Restaurant, etc.)
- the ability to terminate any Wine Card and then reformat it into a different operational card format
- comprehensive reporting across all the databases to generate reports on:
 - customer consumption (or staff service) – what wines, when and how much
 - consumption of each wine – what is most popular, most profitable
 - all transactions by hour, day, month or year
 - transactions relating to each individual customer, supplier or producer
- the ability to export reports to a Microsoft Excel compatible format
- options for secure remote Internet access to monitor the operation of the system and generate reports from anywhere in the world.